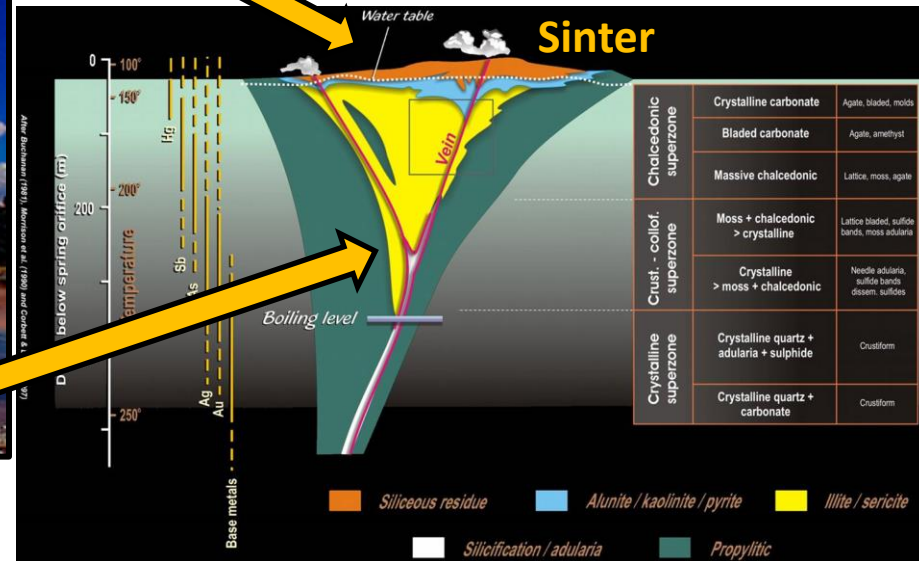


"Value Through Exploration Success & Development"



Hishikari (Japan)
Banded vein,
Bonanza-Grade
Gold/Silver



Idealized cross section of
Low-sulfidation gold/silver deposits

Highland Project Update October 25, 2021



BVA:TSX.V
BRTN:STU
BGAVF:OTCQB

J.A. Kizis, Jr. (AIPG CPG-11513), President of Bravada, is the Qualified Person that created or supervised & approved release of the technical information in this disclosure

Forward-looking Statement

Some of the statements contained in this presentation may be deemed “forward-looking statements.” These include estimates and statements that describe the Company’s future plans, objectives or goals, and expectations of a stated condition or occurrence.

Forward-looking statements may be identified by the use of words such as “believes”, “anticipates”, “expects”, “estimates”, “may”, “could”, “would”, “will”, or “plan”. Since forward looking statements are based on assumptions and address future events and conditions, by their very nature they involve inherent risks and uncertainties.

Actual results relating to, among other things, results of exploration, reclamation, capital costs, and the company’s financial condition and prospects, could differ materially from those currently anticipated in such statements for many reasons such as but not limited to; changes in general economic conditions and conditions in the financial markets; changes in demand and prices for the minerals the Company expects to produce; litigation, legislative, environmental and other judicial, regulatory, political and competitive developments; technological and operational difficulties encountered in connection with the Company’s activities; and changing foreign exchange rates and other matters discussed in this presentation.

Persons should not place undue reliance on the Company’s forward-looking statements. Further information regarding these and other factors, which may cause results to differ materially from those projected in forward-looking statements, are included in the filings by the Company with securities regulatory authorities. The Company does not assume any obligation to update or revise any forward-looking statement that may be made from time to time by the Company or on its behalf, except in accordance with applicable securities laws, whether as a result of new information, future events or otherwise.

The TSX Exchange has not reviewed and does not accept responsibility for the adequacy or accuracy of the contents of this presentation, that has been prepared by management.



Why Low-sulfidation (L.S.) Deposits?

Grade/Very high margin

Small mining footprint

Minimal environmental issues (clean ores)

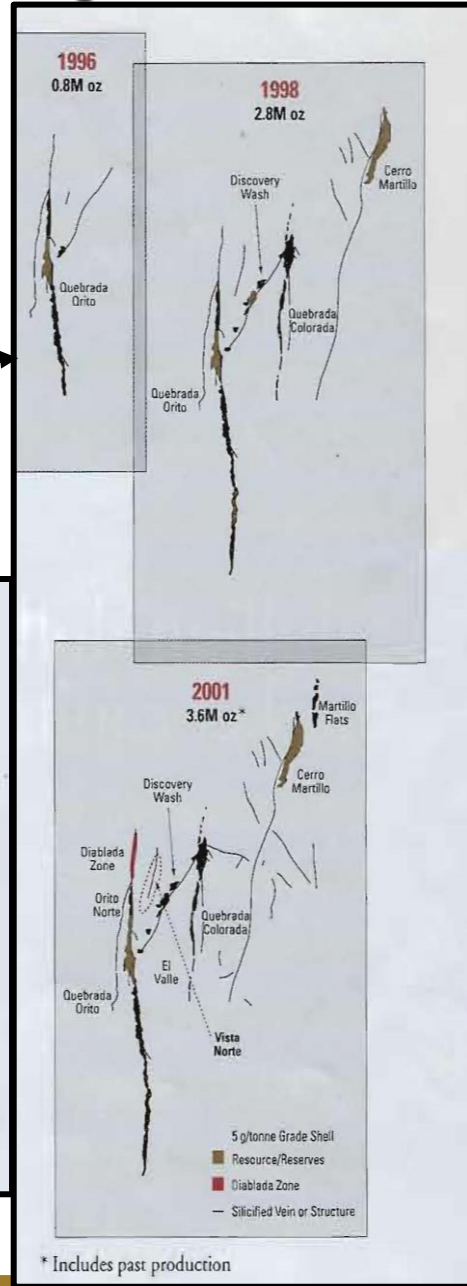
Rapid discovery growth, once ore controls understood

From Meridian's (now Yamana) 2001 Website

El Peñón

2001 HIGHLIGHTS

- Record production of 318,000 ounces of gold at a cost of \$43 per ounce of gold
- Discovered the new high-grade Diablada zone averaging about 17 grams/tonne gold
- Reserves increased by roughly 16% to 1.8 million ounces of gold
- Total reserves and resources increased to 2.8 million ounces



L.S. Success in New Zealand

OceanaGold extends high-grade gold and silver mineralization at their WKP Project*

September 19, 2018 news release

“Significant Intercepts (true widths)

- 5.0m @ 39.04 g/t Au, 76.6 g/t Ag
- 3.6m @ 35.79 g/t Au, 43.3 g/t Ag
- 4.5m @ 10.46 g/t Au, 7.5g/t Ag
- 2.1m @ 23.08 g/t Au, 49.5 g/t Ag”

Note: Oceana operates the Waihi/Martha mine complex within the Hauraki Goldfield

** Located ~10km north of the Martha mine with a 43-101 report (2013) of an Inferred Resource of 1.3MM tonnes @ 6.2g/t Au & 9.3g/t Ag inferred*



Recent L.S. Success in Nevada

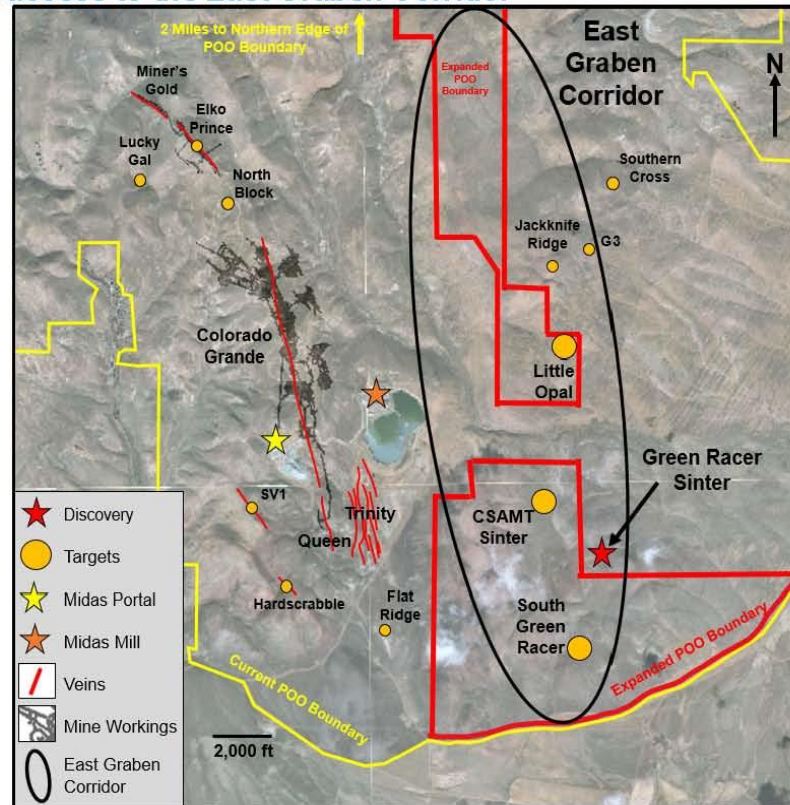
Hecla Mining Releases First Quarter Exploration Report (5 oz/ton Gold over 13 Feet at Green Racer Sinter) – New Release May 18, 2021

FIGURE 1: MIDAS GREEN RACER SINTER DISCOVER LOCATION

Expanded POO allows full access to the East Graben Corridor



*Modern mining
began 1997,
latest discovery
23 years later in
December 2020*



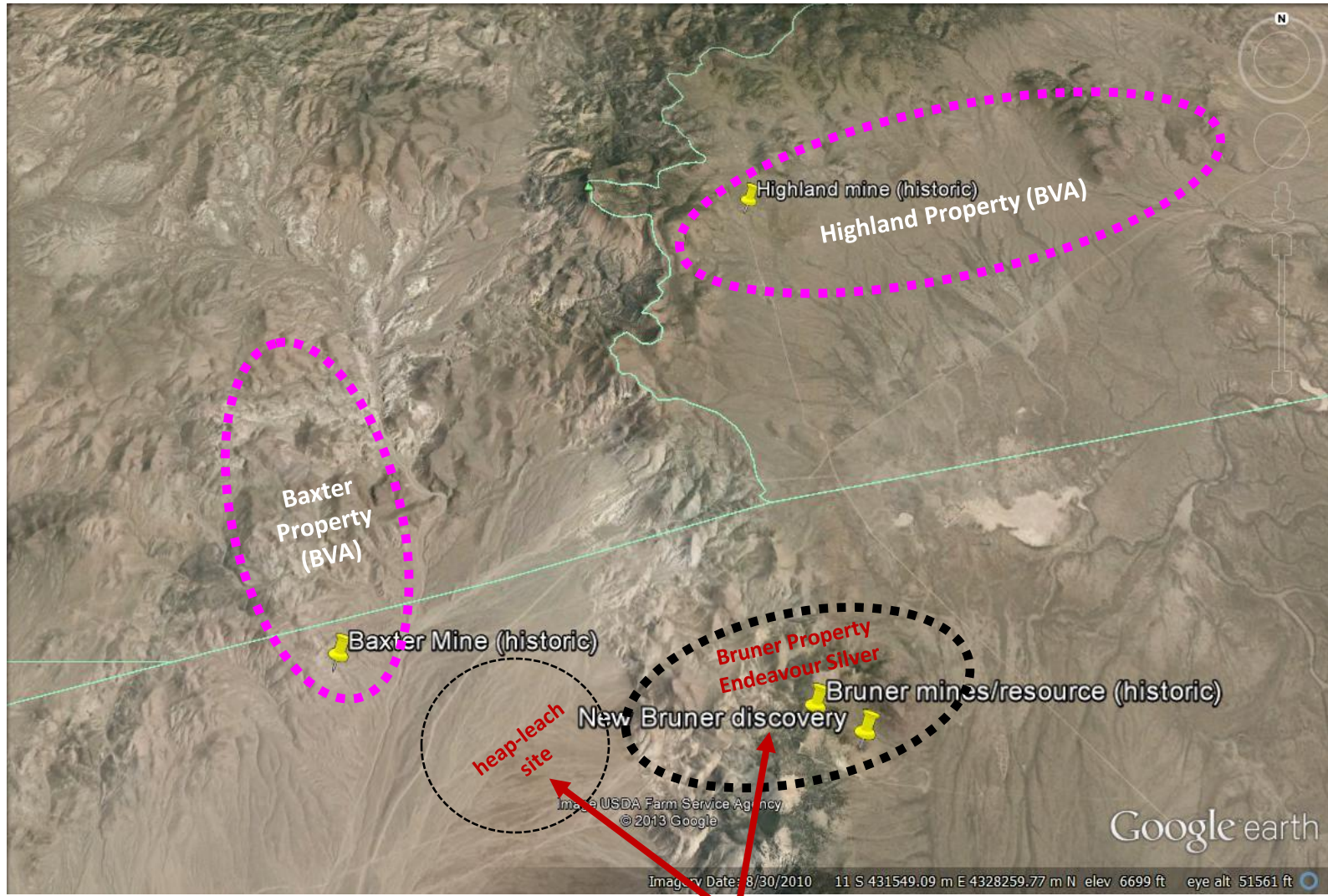
NYSE: HL

RESPONSIBLE. SAFE. INNOVATIVE. | 1

“... just two miles from the mine portal...” said Phillips S.
Baker, Jr., President and CEO



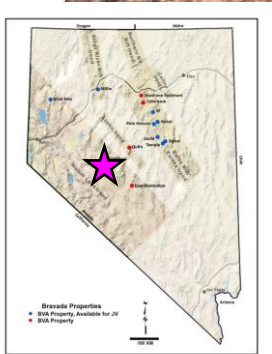
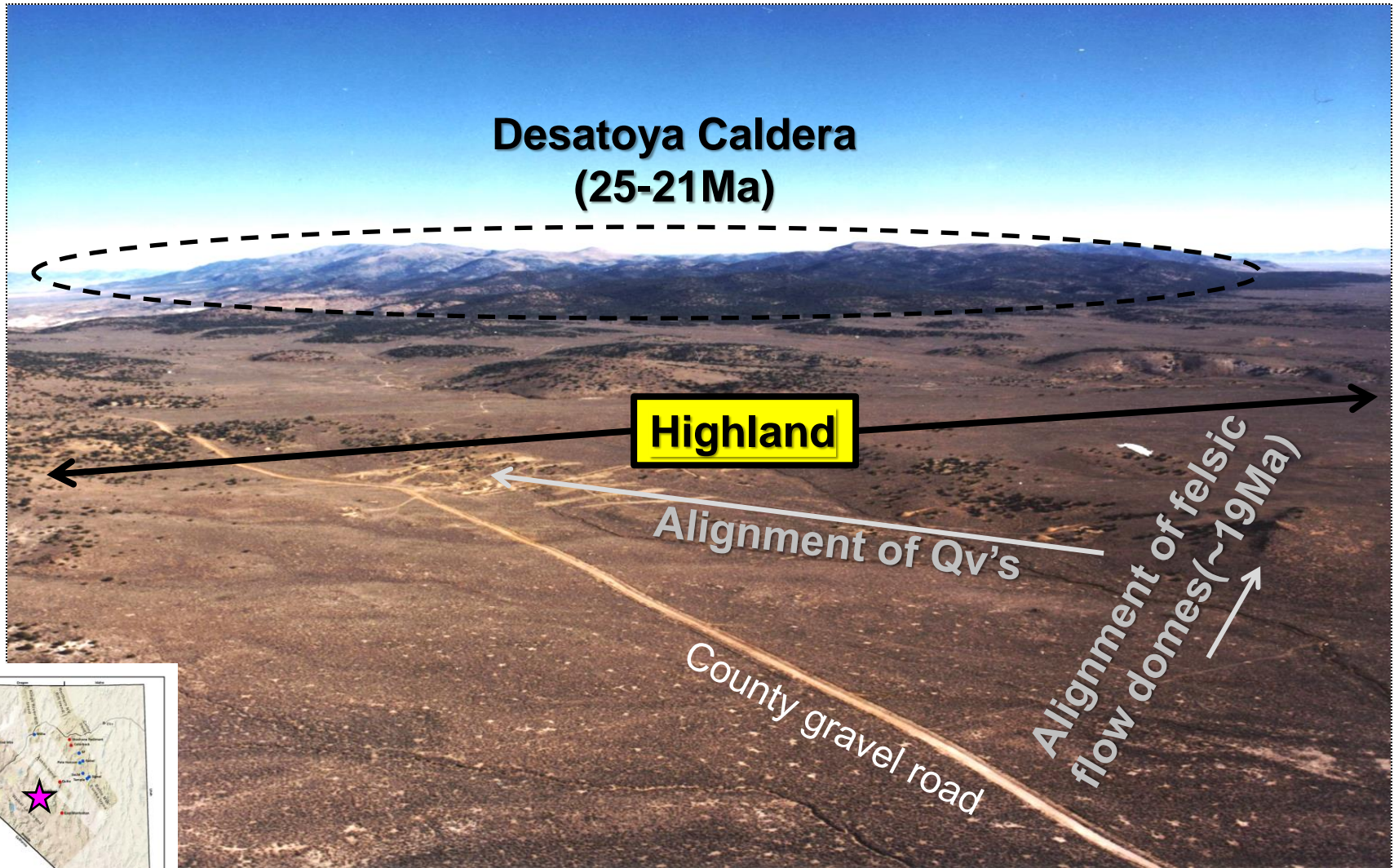
L.S. District – Highland, Baxter, Bruner



Bruner purchased by Endeavour Silver in 2021

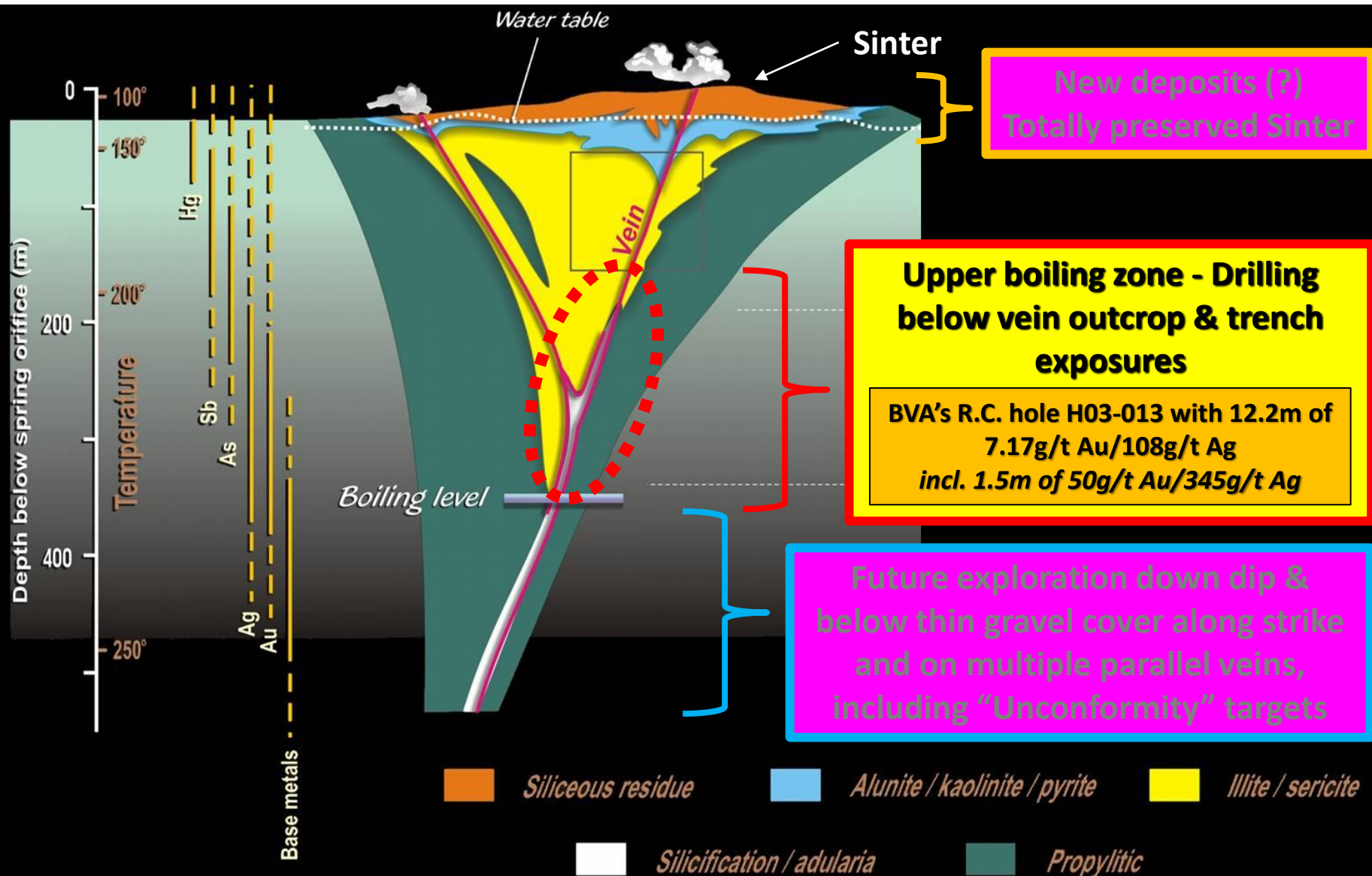


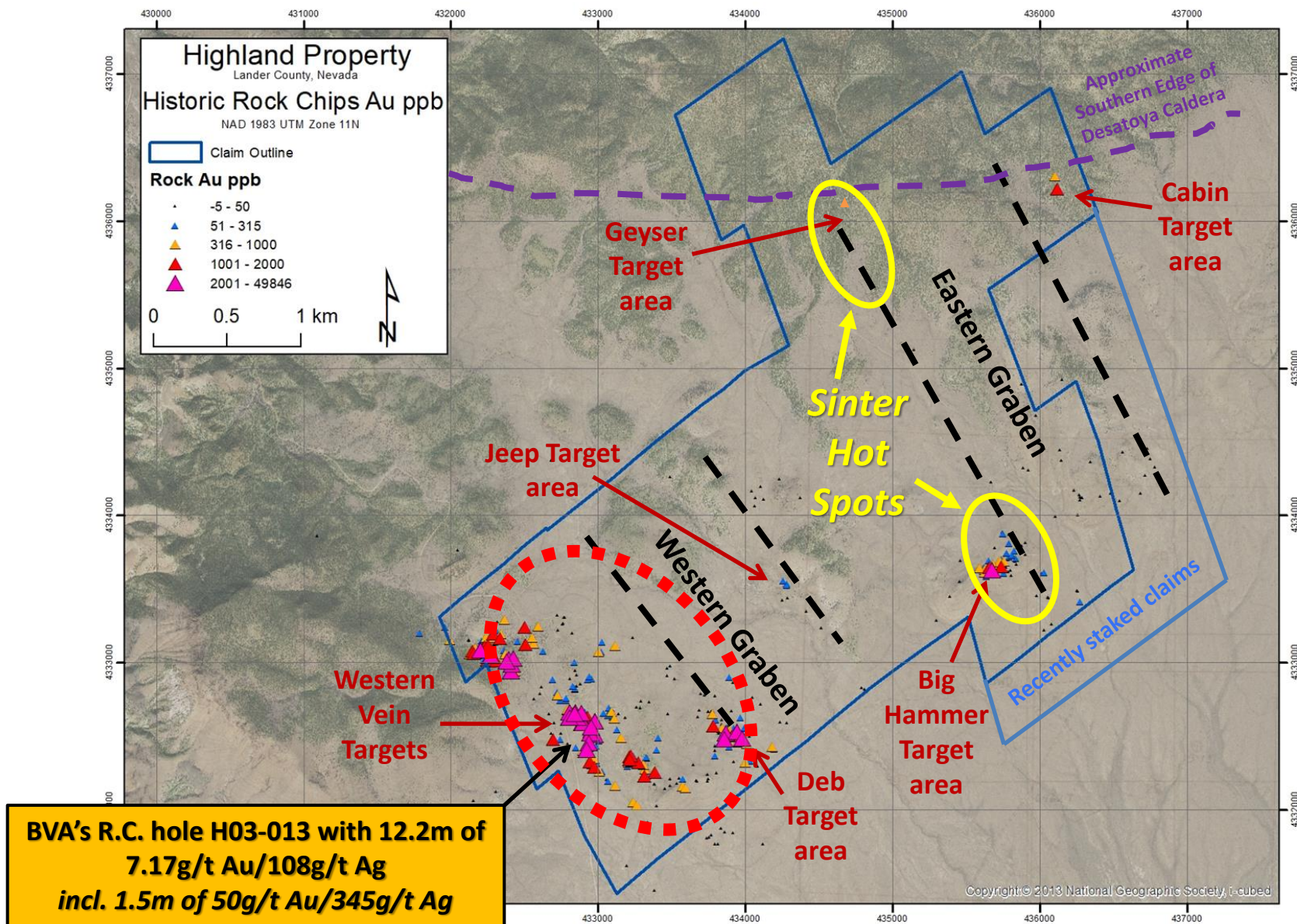
Logistics – Helicopter View to North



Western Targets – Upper Boiling zone

After Buchanan (1981), Morrison et al. (1990) and Corbett & Leach (1997)

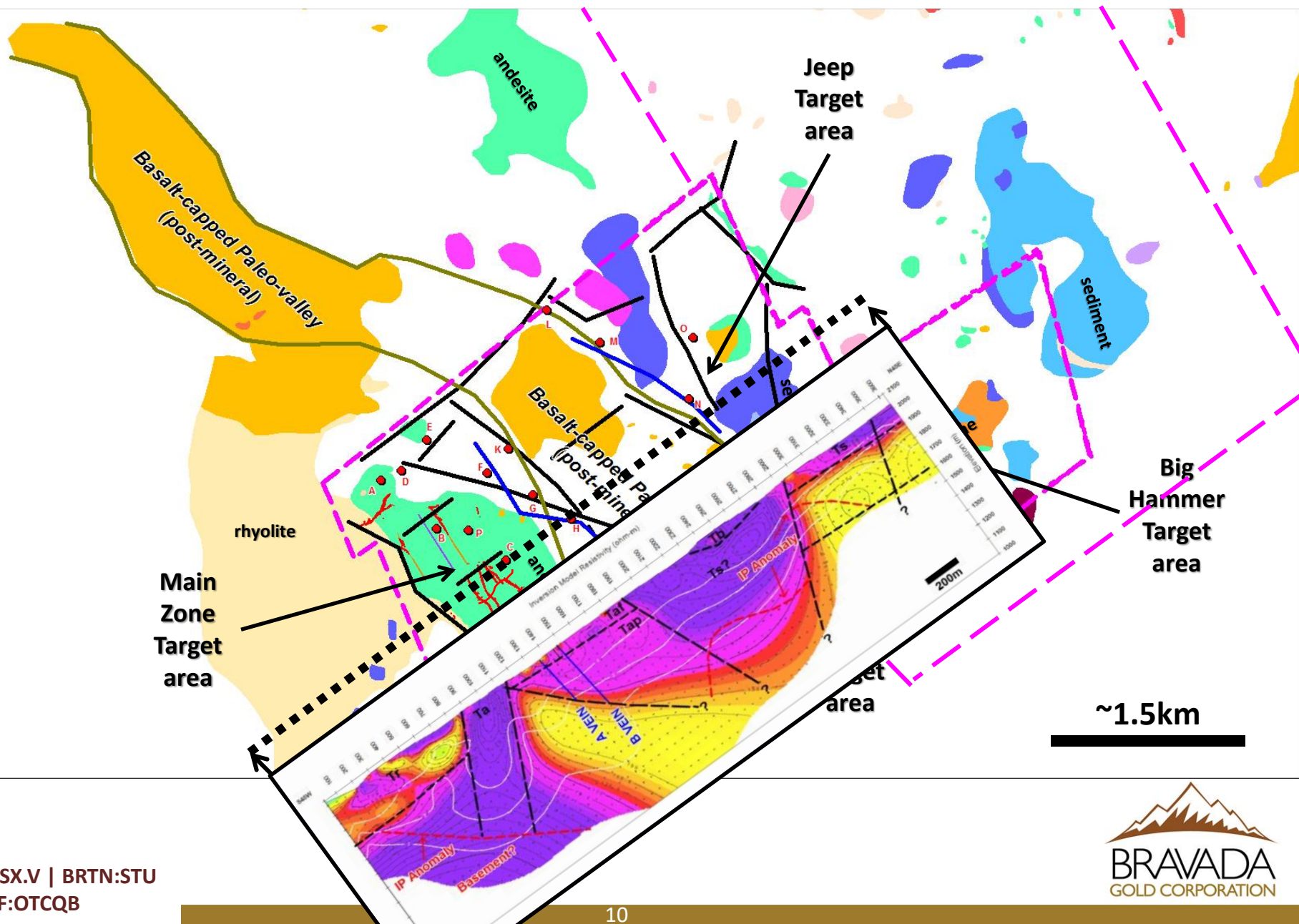




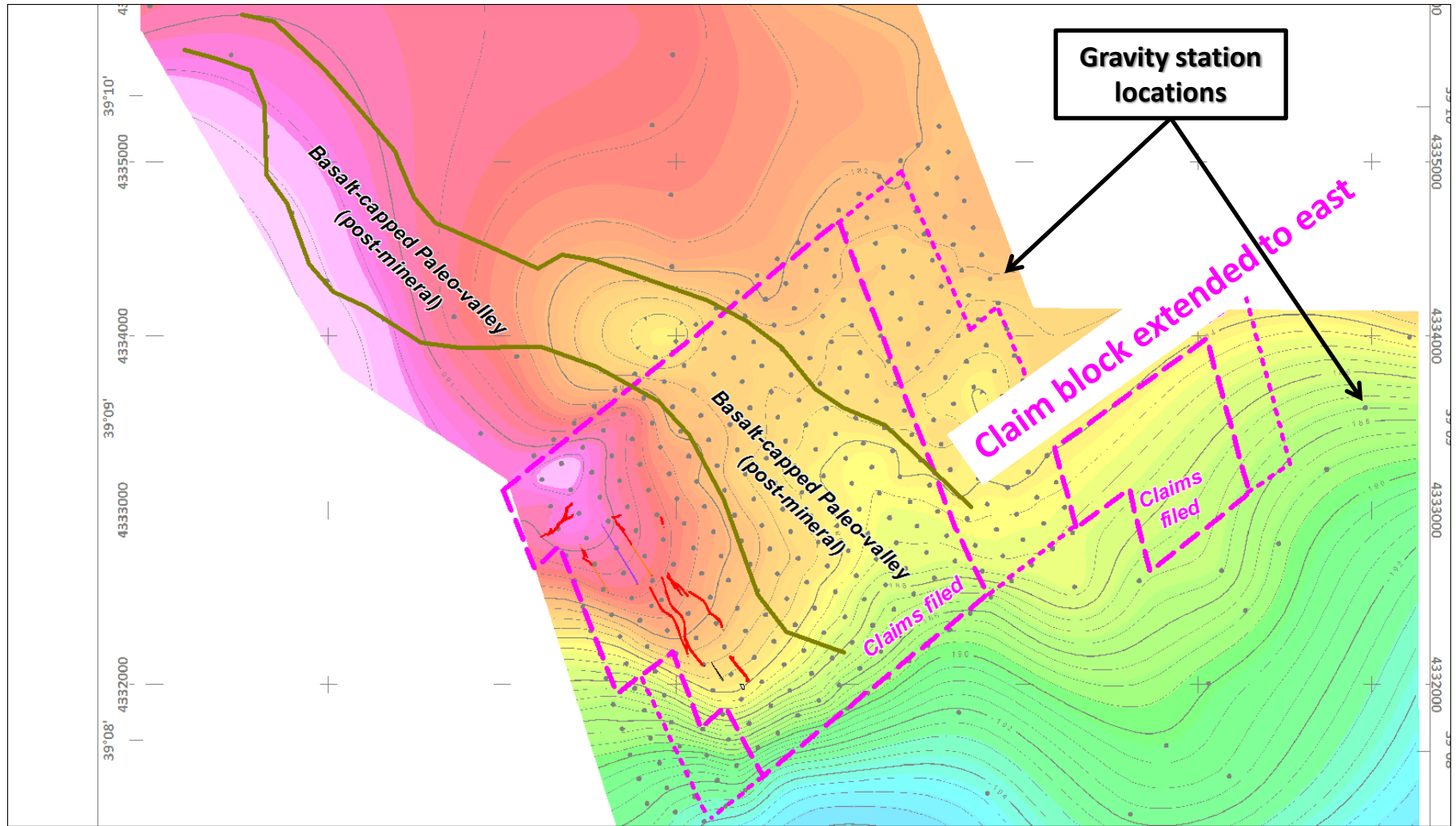
Wide-spread Au/Many Targets

Graben margins based on geophysics and rare outcrop

Western Targets – IP/Resistivity



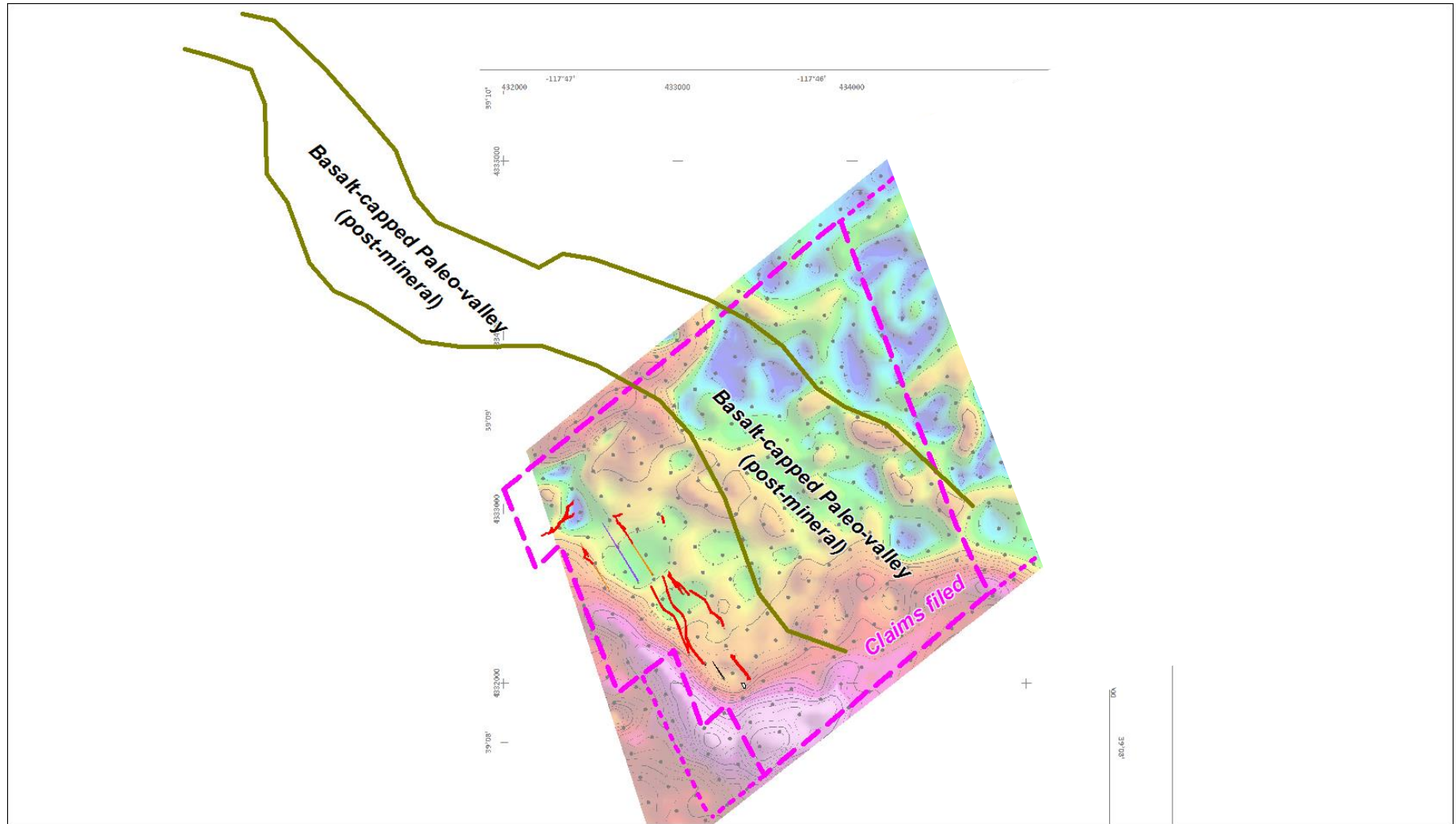
Gravity w/ Post-mineral Paleo-valley



Complete Bouguer Gravity

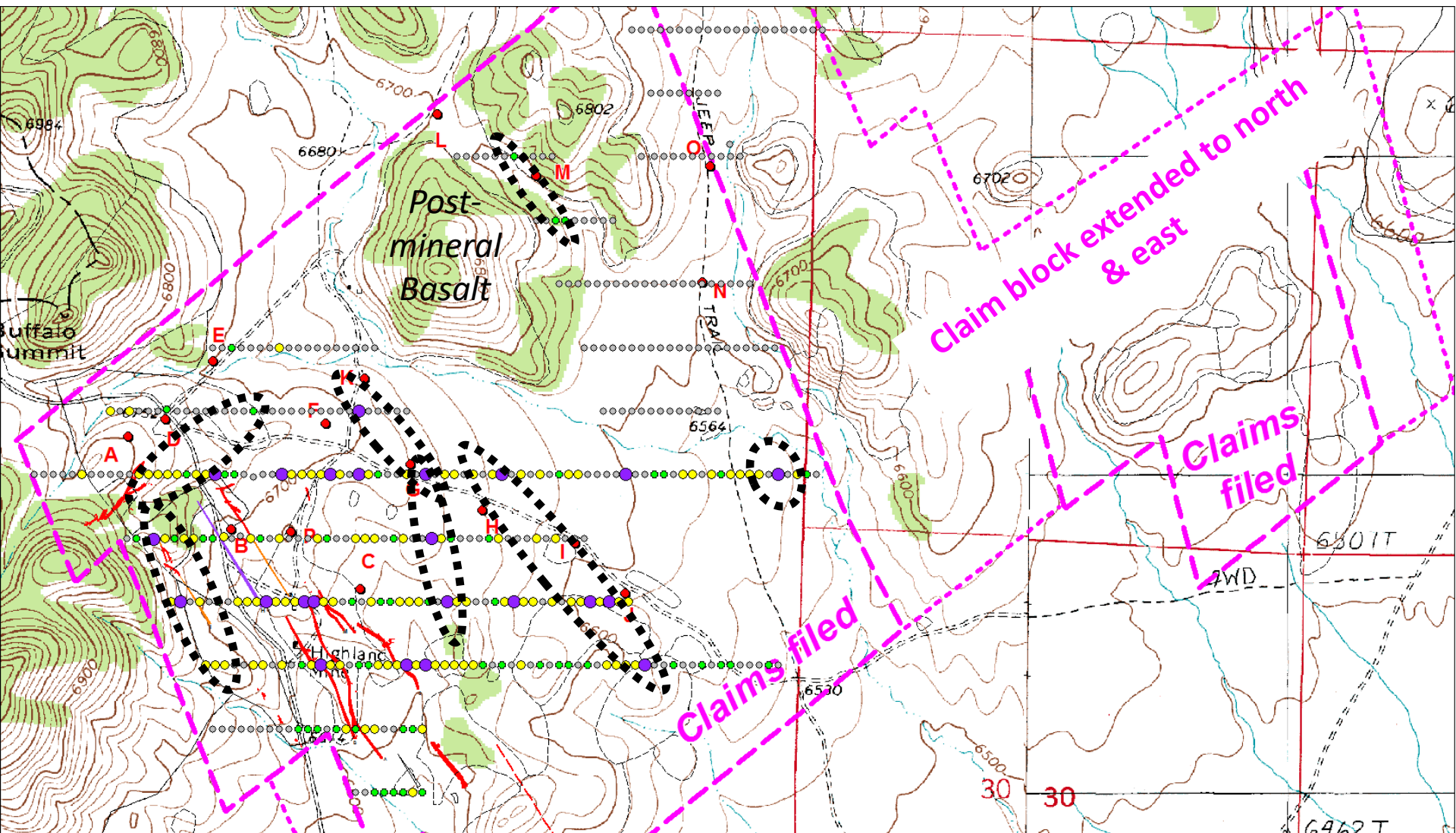


Gravity w/ Post-mineral Paleo-valley



Gravity Horizontal Derivative

Western Targets - Soil Interpretation



Grade breakdown: <5-5, 5-10, 10-50, +50 (purple)

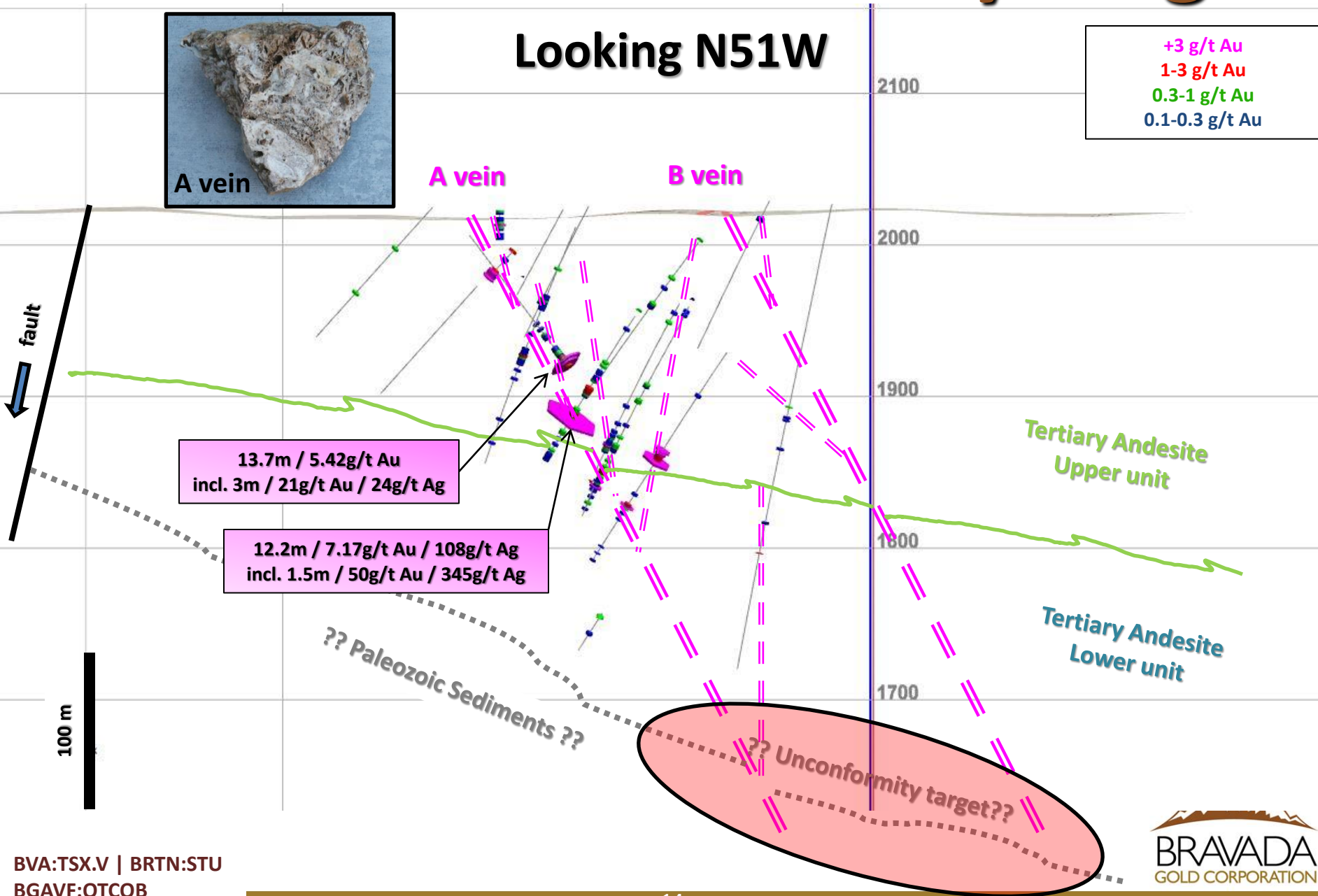
BVA:TSX.V | BRTN:STU
BGAVF:OTCQB

Possible vein extensions

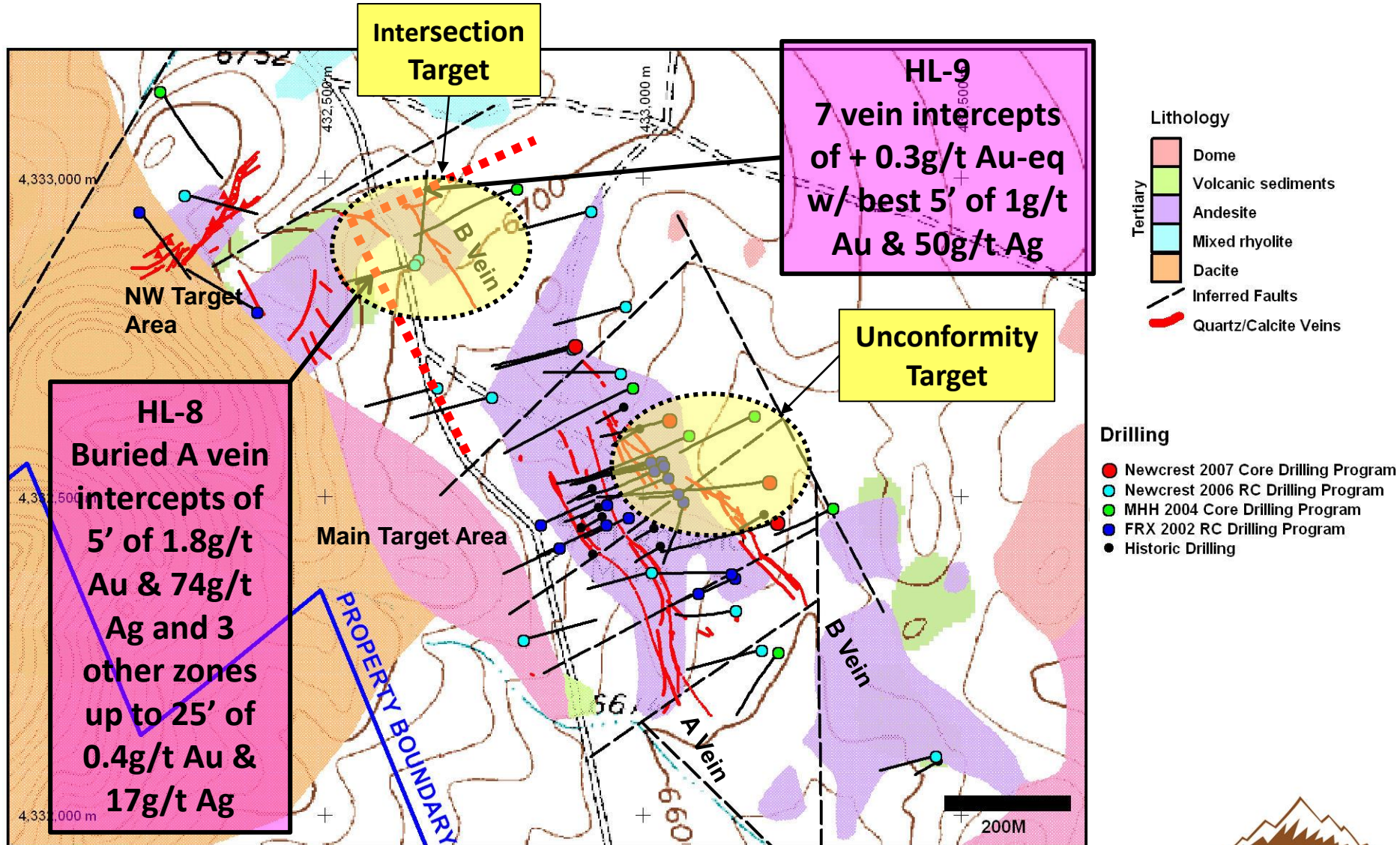
Au



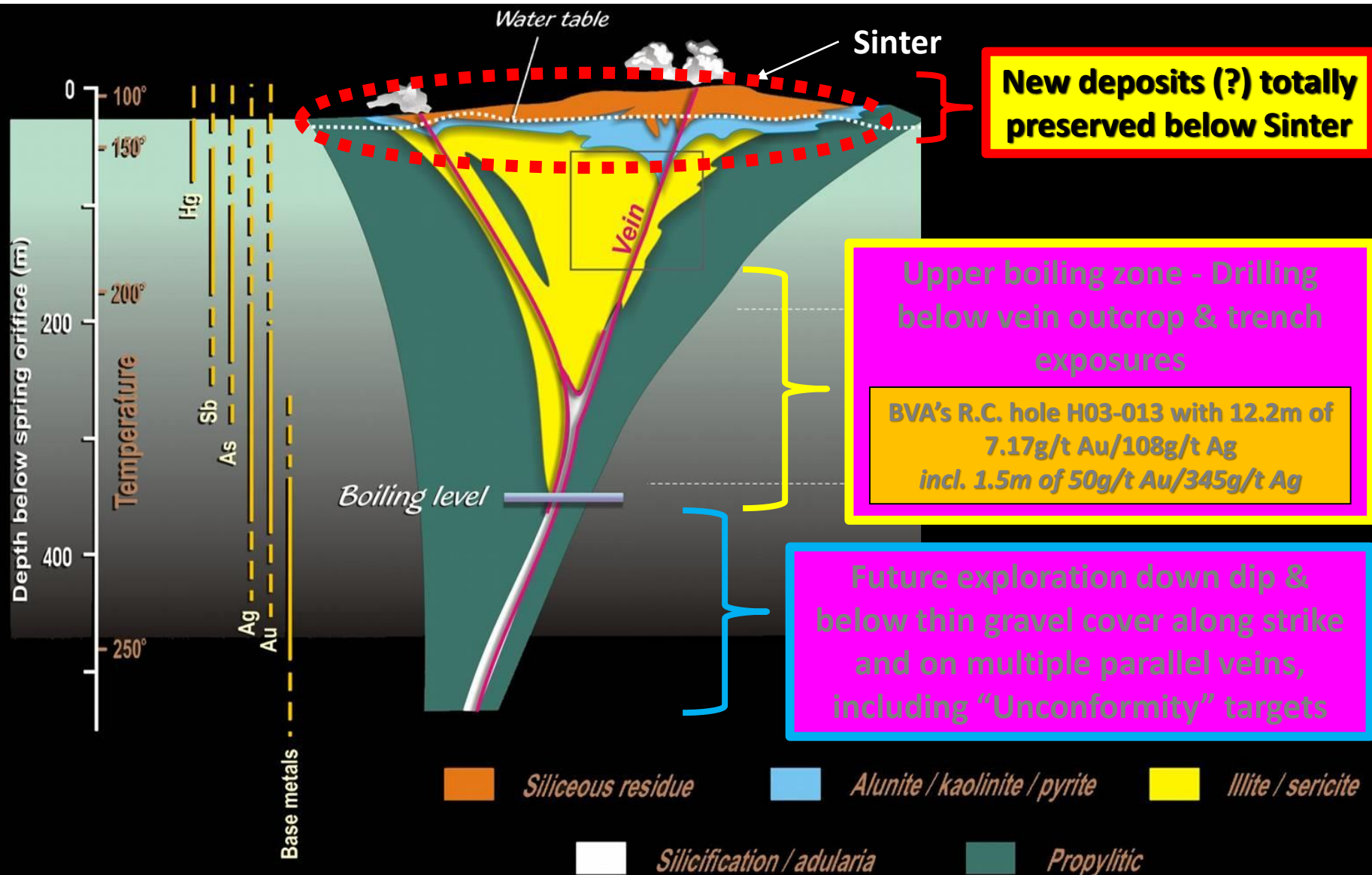
Untested Unconformity Target



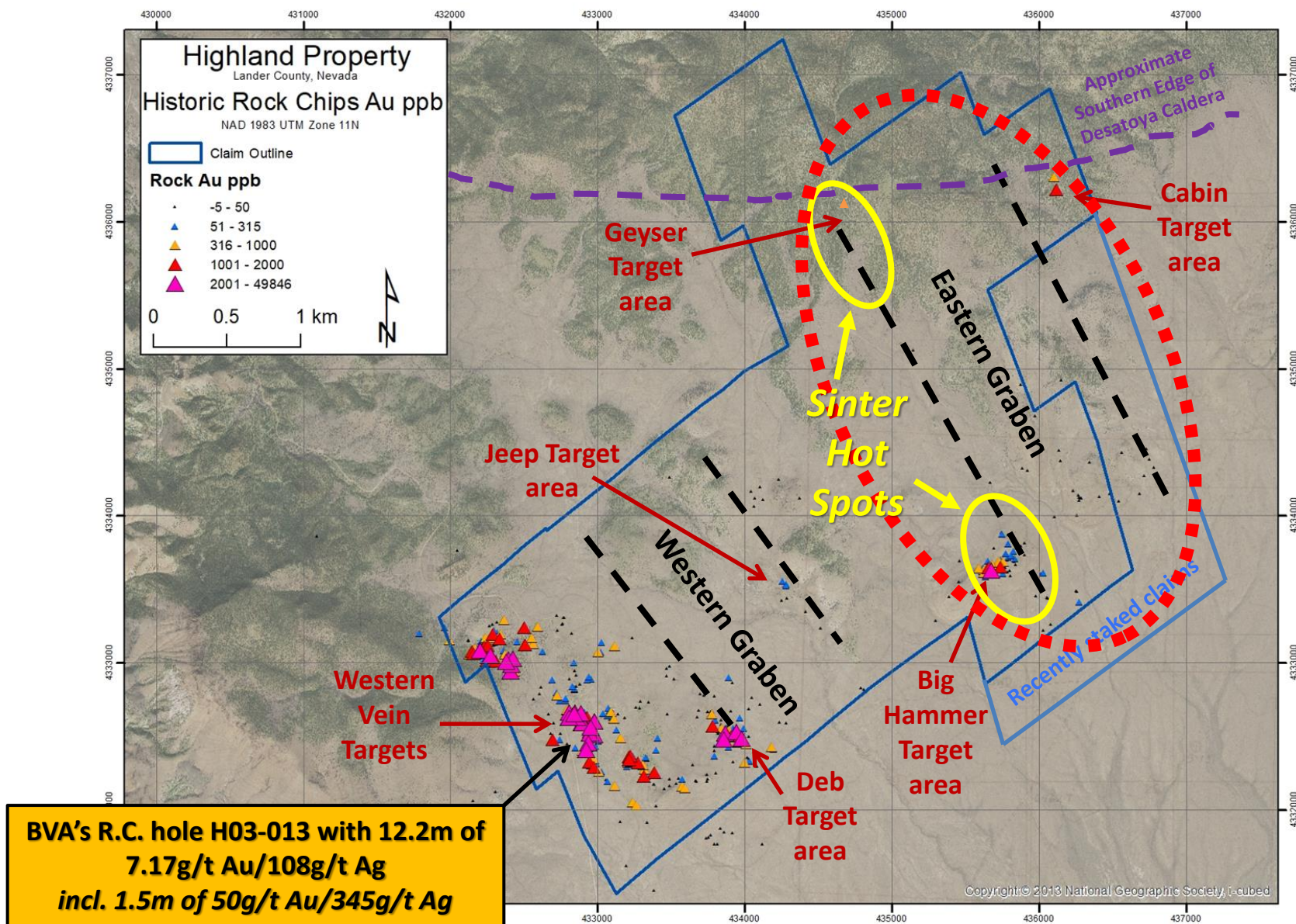
Vein Intersection & Unconformity Targets



Eastern Targets – Top of system

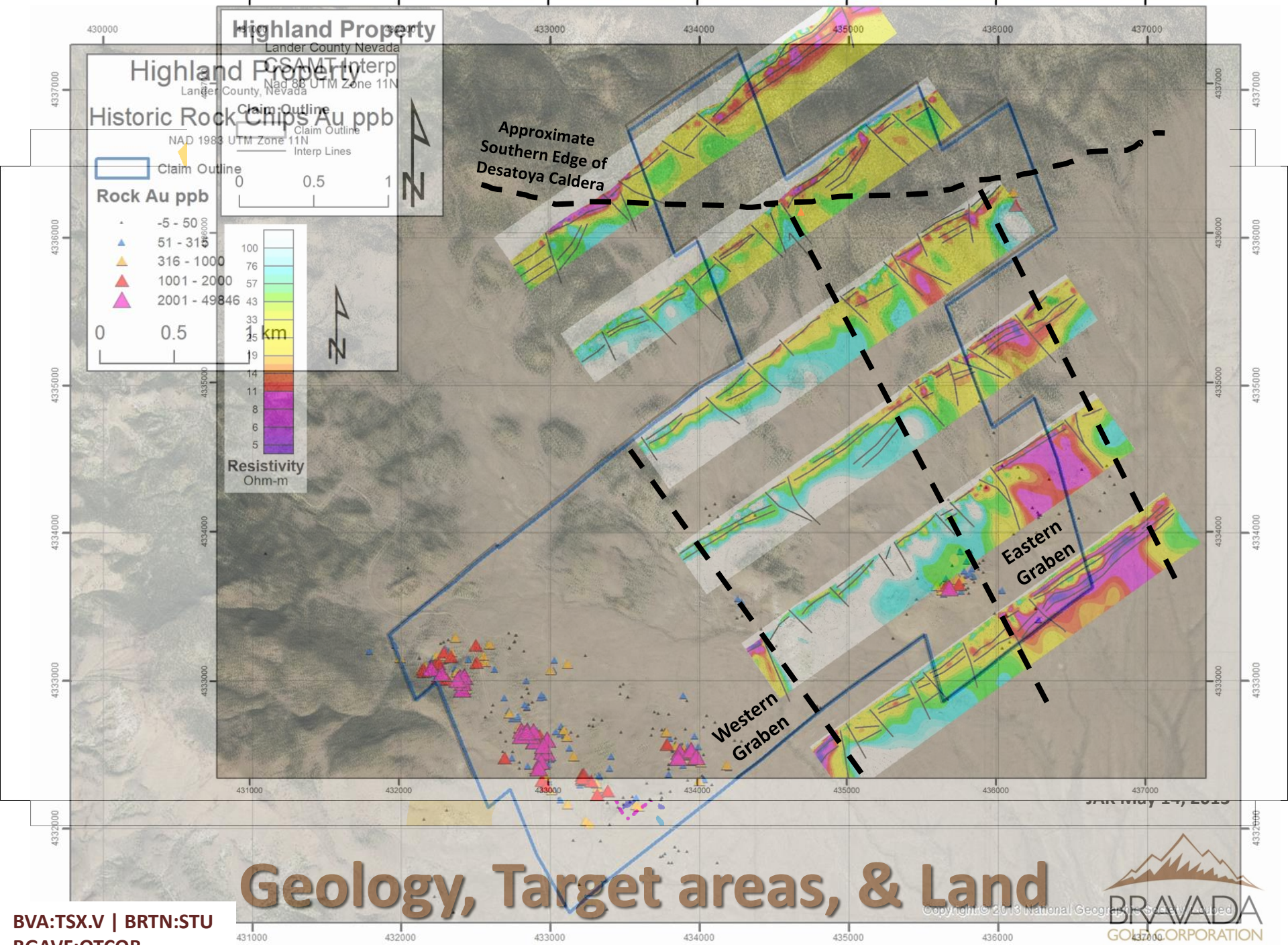


After Buchanan (1981), Morrison et al. (1990) and Corbett & Leach (1997)



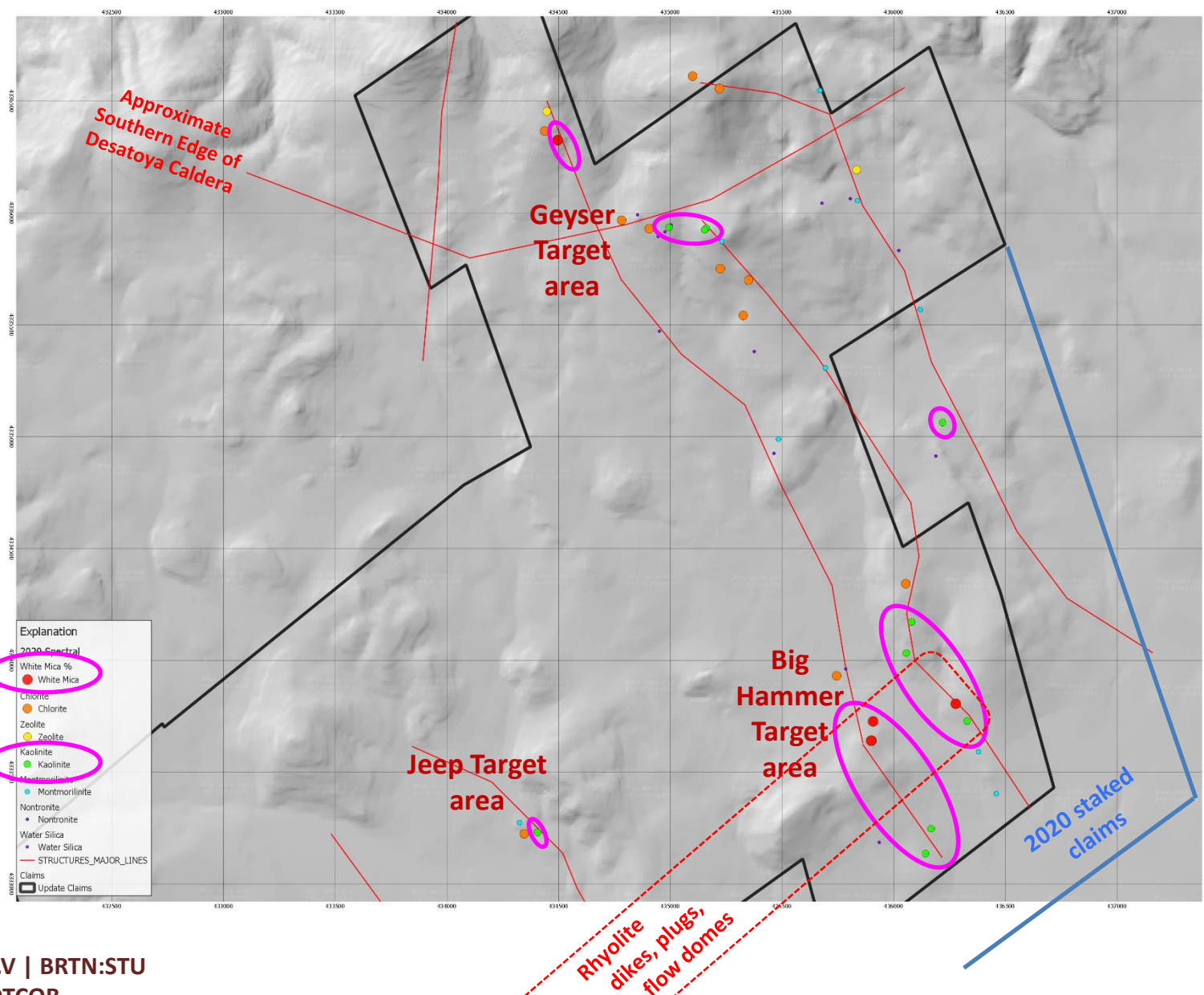
Widespread Fossil Sinter Pools, +/-Au

Graben margins based on geophysics and rare outcrop



BVA:TSX.V | BRTN:STU
BGAVF:OTCQB

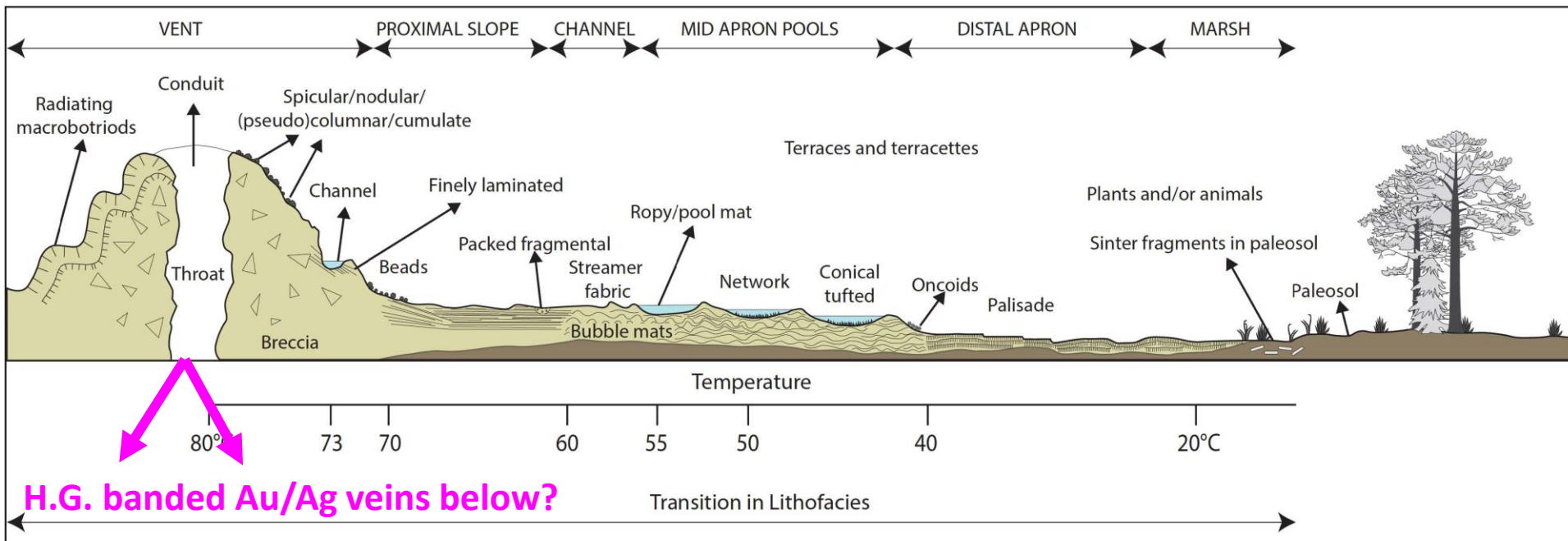
Clay study – Hot acidic fluids reflected in clays



Sinter Mapping

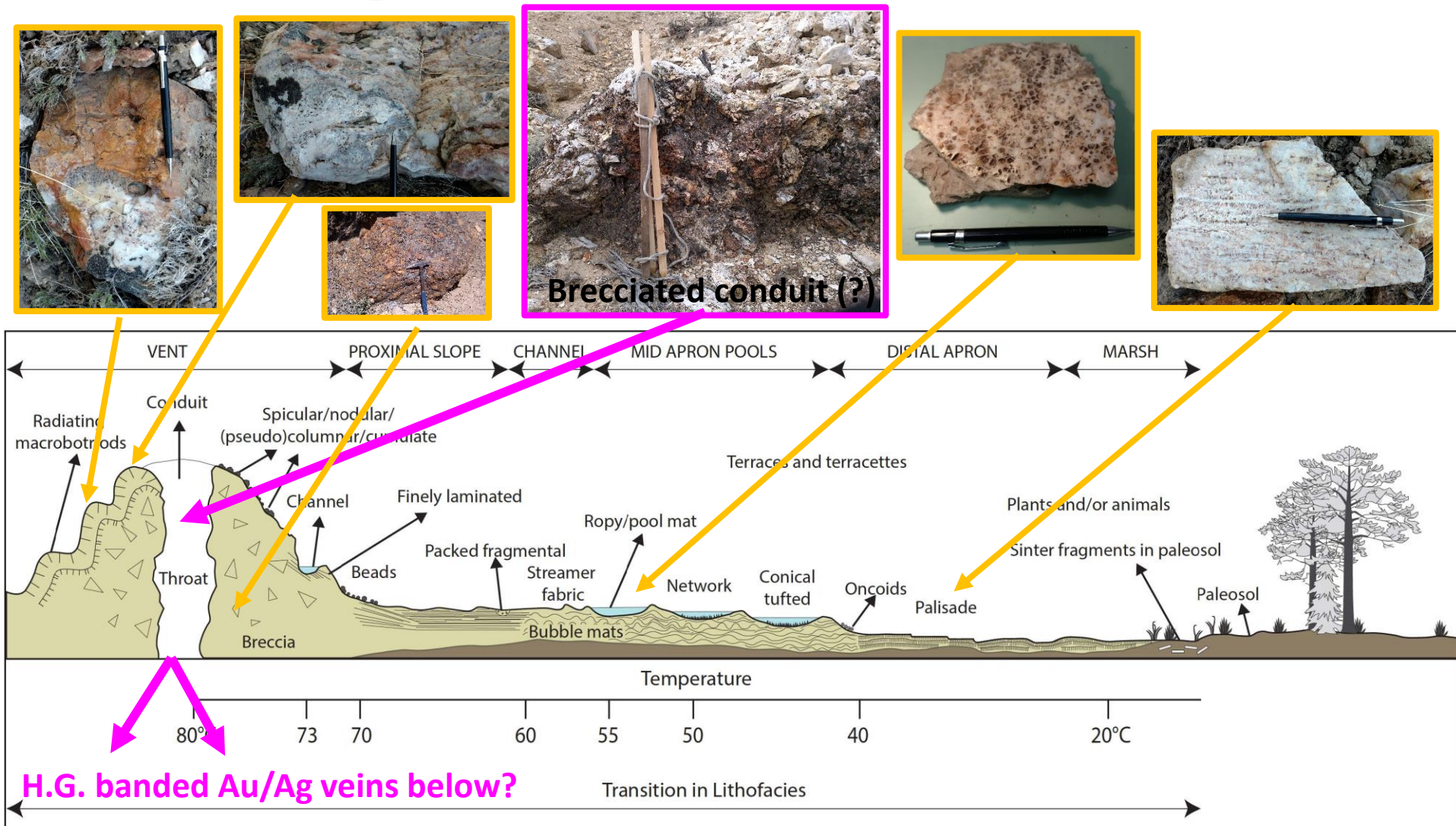
2016 Publication Demonstrating Sinter Mapping in the 200 x 40km Hauraki Goldfield, New Zealand

where *at least 50 low-sulfidation deposits* formed 16.3-5.6Ma with
*production of 10.29 million oz Au & 48.2 million oz Ag & counting**



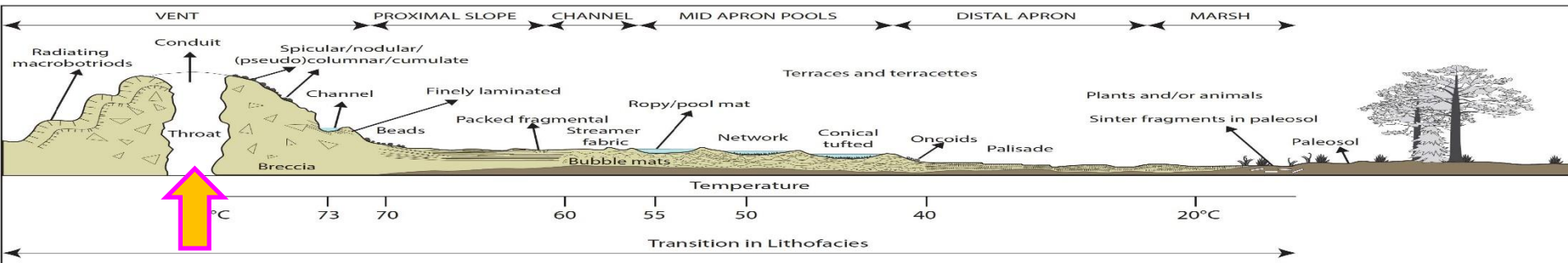
*From Hamilton et.al., 2016, The Kohuamuri siliceous sinter as a vector for epithermal mineralization, Coromandel Volcanic Zone, New Zealand: Miner Deposita.

Highland Sinter Features



*From Hamilton et.al., 2016, The Kohuamuri siliceous sinter as a vector for epithermal mineralization, Coromandel Volcanic Zone, New Zealand: Miner Deposita.

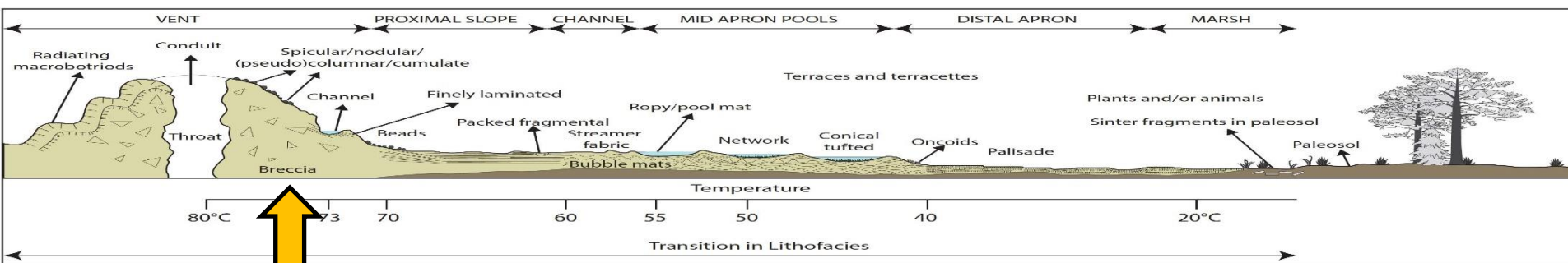
Brecciated Conduit (Geyser)



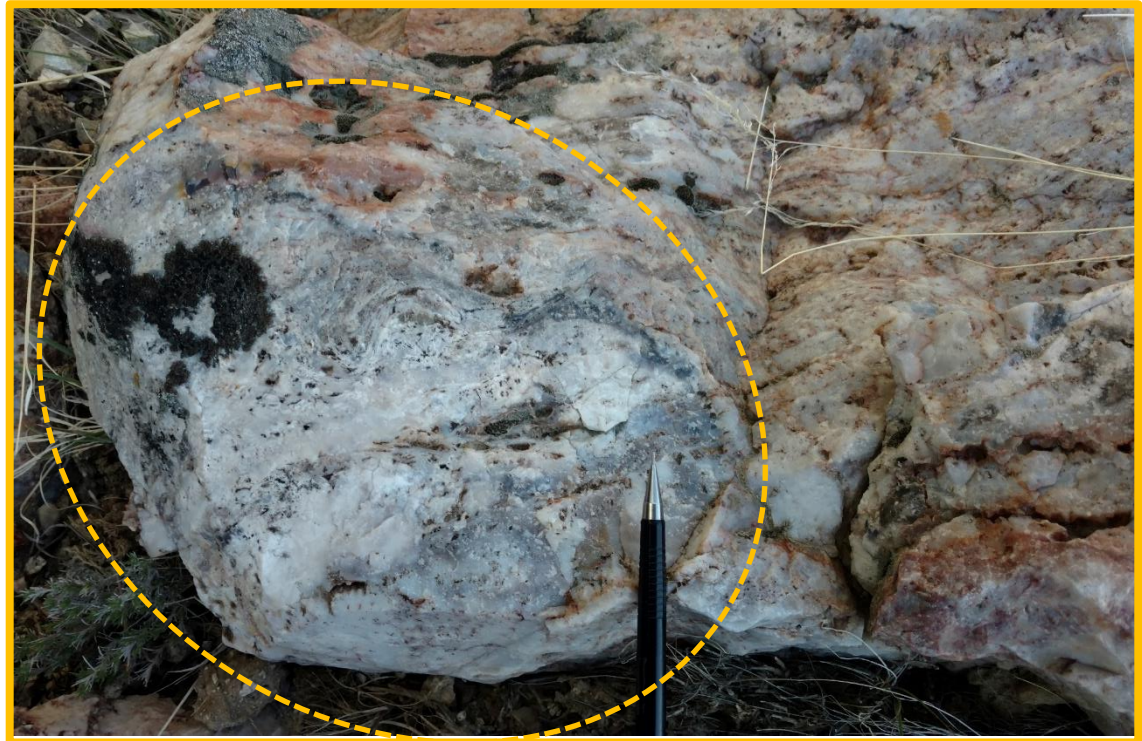
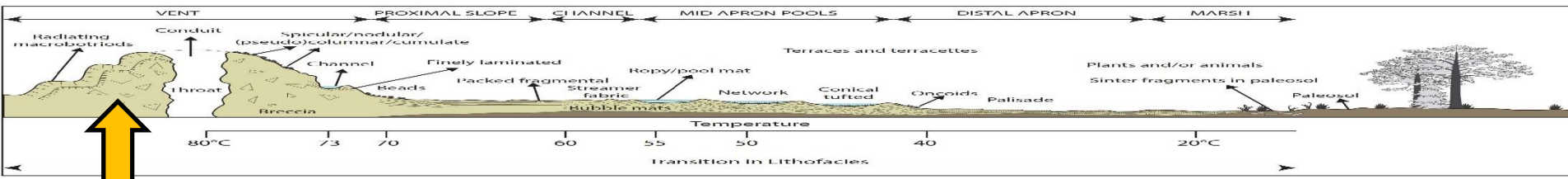
~1m



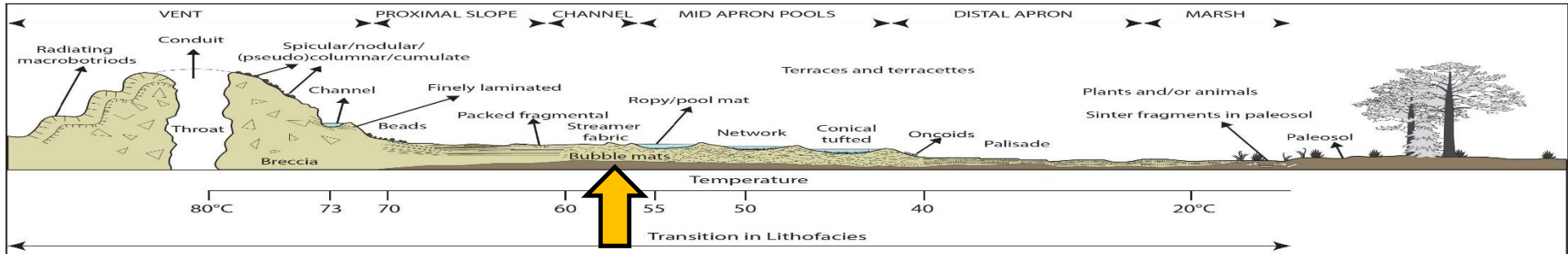
Explosion Breccia (Geyser) – silicified mud



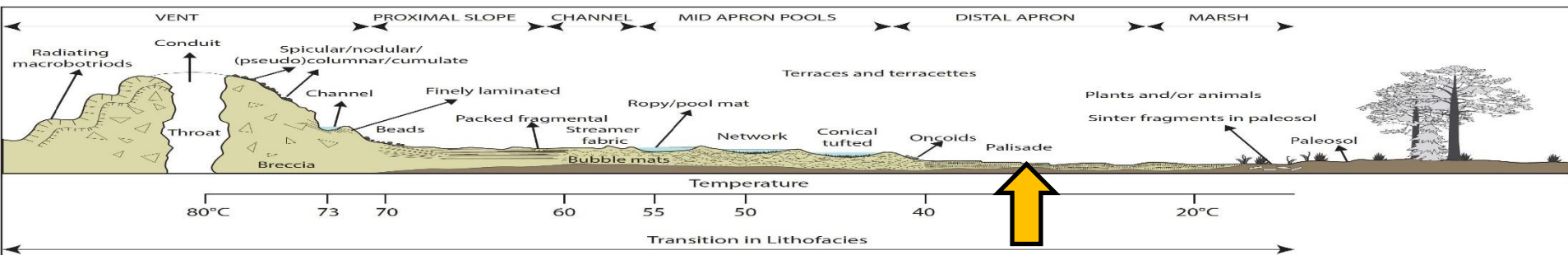
"Cabbage-head" Algal Growth (Geyser)



Bubble Mat (Big Hammer Sinter)



Palisade (fibrous texture, Geyser)



Big Hammer Target Section looking Northwest

